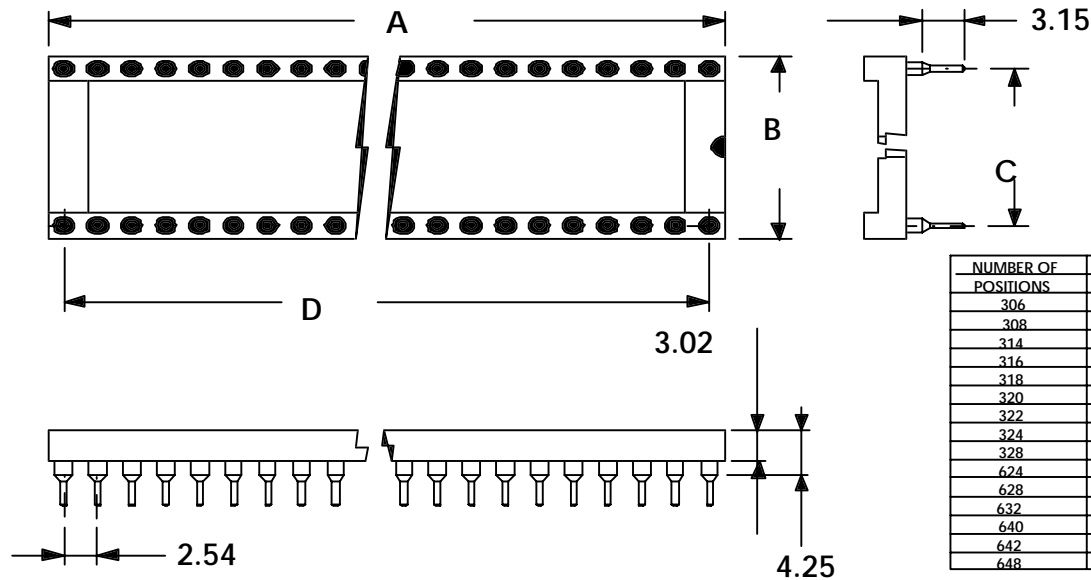


**CUSTOMER DRAWING ONLY**




NUMBER OF POSITIONS	DIMENSIONS			
	A	B	C	D
306	7.62	10.64	7.62	5.08
308	10.16	10.64	7.62	7.62
314	17.78	10.64	7.62	15.24
316	20.32	10.64	7.62	17.78
318	22.86	10.64	7.62	20.32
320	25.40	10.64	7.62	22.86
322	27.94	10.64	7.62	25.40
324	30.48	10.64	7.62	27.94
328	35.56	10.64	7.62	33.02
624	30.48	17.75	15.24	27.94
628	35.56	17.75	15.24	33.02
632	40.64	17.75	15.24	38.10
640	50.80	17.75	15.24	48.26
642	53.34	17.75	15.24	50.80
648	60.96	17.75	15.24	58.42

**PART NUMBERING**  
**0800-X XX -XX**

DIP Spacing (3,4,6 or 9)  
# of Pins

Contact Plating:  
05 - (5μ" Au)  
10 - (10μ" Au)  
30 - (30μ" Au)

Drawn By: LJ, H	Checked By: PFR	Material: Insulator: PBT, UL94V-O; Pin: Brass 1/2 Hard; Contact: BeCu	 <b>Chupond America, Inc.</b> 6168 Greenhill Road, New Hope, PA 18938 USA
Drawn: 11/4/94	Scale: None	Plating: As stated with 50μ" Ni underplating	
Released: 11/4/94	Sheet 1 of 1	Tolerances: ± 0.120; ± 0.25; and ±2°	ENG. #: <b>0800-XXX-XX</b> Rev. A